



GENERATOR SOURCE

SALES · RENTALS · SERVICE

Caterpillar - 1250 kW - JUST ARRIVED

Generator Set Specs

Unit#: 89331

Manufacturer: Caterpillar

Capacity: 1250 kW

Rating: Standby

Voltage: 1880 Amps @ 277/480

V (60 Hz, Three-Phase)

of Leads: 6 Lead

Model#: SR4B

Serial#: 2GN01632

Engine Specs

Mfr: Caterpillar

Year:

Hours: 1581

Fuel: Diesel

Model#: 3512

Serial#: 1KZ02120

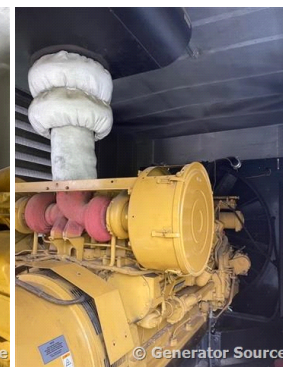
Description: Caterpillar 1250 kW Diesel Generator Model #: SR4B Serial# 2GN01632 1581 Hours, 277/480 Volt, 3 Phase, Sound Attenuated Enclosure

Additional Features: Sound Attenuated Enclosure, Auto Start/Stop, Safety Shut Down, 24v Volt Alternator, Dry Pack Air Cleaner, 2000 Amp Circuit Breaker, Muffler, Tank Block Heater, Digital Generator Panel, Digital Engine Panel, Engine Mount Radiator, 3500 Gallon Double Wall Base Fuel Tank.

Generator Dimensions: 344 7/8 x 127 x 156 3/4

Overall Weight: 55,000 lbs.

Price: Call us at 800-853-2073 for a quote





Generator Source thoroughly tests all of our products!

The pricing displayed on our website is subject to change based on deinstallation costs, installation requirements, rigging/disposal, and any other situational variables, but we do try to keep it as up to date as possible.

Copyright © Generator Source. All Rights Reserved. Caterpillar, Detroit, Cummins, Perkins, SDMO, and all other brand names are trademarks of their individual prospective companies.

sales@generatorsource.com - generatorsource.com
303-659-2073 - 1-800-853-2073

FORMERLY
Diesel
SERVICE & SUPPLY