



# GENERATOR SOURCE

SALES · RENTALS · SERVICE

## Cummins - 1100 kW

### Generator Set Specs

**Unit#:** 89260

**Manufacturer:** Cummins

**Capacity:** 1100 kW

**Rating:**

**Voltage:** 1654 Amps @ 277/480

V (60 Hz, Three-Phase)

**# of Leads:**

**Model#:** CC734B

**Serial#:** 120001

### Engine Specs

**Mfr:** Cummins

**Year:** 1987

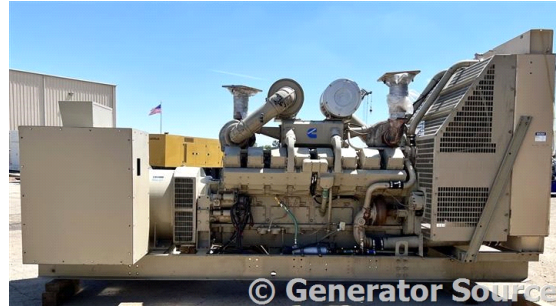
**Hours:** 347

**Fuel:** Diesel

**Model#:** KTA50-G5-

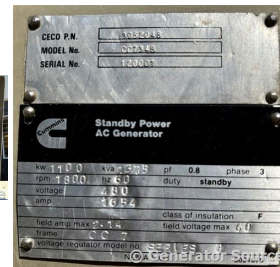
GC2

**Serial#:** 33112628



**Description:** Cummins 1100 kW Diesel Generator Model #: CC734B Serial# 120001 Year 1987, 347 Hours, 277/480 Volt, 3 Phase, Open Skid Mounted

**Additional Features:** Auto Start/Stop, 24 Volt Alternator, Dry Pack Air Cleaner, Muffler, Tank Type Block Heater, Standard Generator Panel, Standard Engine Panel, Engine Mount Radiator.



Generator Dimensions: 202"L x 86"W x 103"H

Overall Weight: 21,500 lbs.

**Price:** Call us at 800-853-2073 for a quote

**Generator Source thoroughly tests all of our products!**

The pricing displayed on our website is subject to change based on deinstallation costs, installation requirements, rigging/disposal, and any other situational variables, but we do try to keep it as up to date as possible.

Copyright © Generator Source. All Rights Reserved. Caterpillar, Detroit, Cummins, Perkins, SDMO, and all other brand names are trademarks of their individual prospective companies.

sales@generatorsource.com - generatorsource.com  
303-659-2073 - 1-800-853-2073

FORMERLY  
**Diesel**  
SERVICE & SUPPLY