



# GENERATOR SOURCE

SALES · RENTALS · SERVICE

## Cummins - 800 kW - SOLD

### Generator Set Specs

**Unit#:** 88803

**Manufacturer:** Cummins

**Capacity:** 800 kW

**Rating:**

**Voltage:** 1202.8 Amps @  
277/480 V (60 Hz, Three-Phase)

**# of Leads:** 12

**Model#:** 800DQFAB-7134

**Serial#:** A080149786

### Engine Specs

**Mfr:** Cummins

**Year:** 2008

**Hours:** 1000

**Fuel:** Diesel

**Model#:** QST30-G5

**Serial#:** 37232912

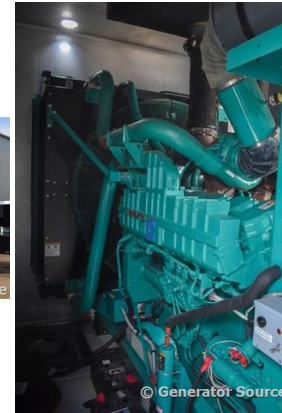


© Generator Source

**Description:** Cummins 800 kW Diesel Generator, Generator Model #: 800DQFAB-7134, Serial #: A080149786, Year 2008, 1000 Hours Run, 277/480 Volt, 3 Phase, Sound Attenuated Enclosure 1500 Gallon Base Fuel Tank.

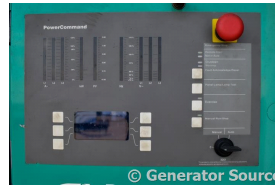


© Generator Source



© Generator Source

**Additional Features:** Sound Attenuated Enclosure, Auto Start/Stop, Safety Shut Down, 24 Volt Alternator, Dry Pack Air Cleaner, 1200 Amp Circuit Breaker, Muffler, Tank Type Block Heater, Digital Generator Panel, Digital Engine Panel, Engine Mount Radiator, 1500 Gallon Fuel Tank.



© Generator Source



© Generator Source

Generator Dimensions: 276"L x 126"W x 149"H

Overall Weight: 41,000 lbs.



© Generator Source

**Price:** Call us at 800-853-2073 for a quote

**Generator Source thoroughly tests all of our products!**

The pricing displayed on our website is subject to change based on deinstallation costs, installation requirements, rigging/disposal, and any other situational variables, but we do try to keep it as up to date as possible.

Copyright © Generator Source. All Rights Reserved. Caterpillar, Detroit, Cummins, Perkins, SDMO, and all other brand names are trademarks of their individual prospective companies.

sales@generatorsource.com - generatorsource.com  
303-659-2073 - 1-800-853-2073

FORMERLY  
**Diesel**  
SERVICE & SUPPLY