



# GENERATOR SOURCE

SALES · RENTALS · SERVICE

## Cummins - 2000 kW - SOLD

### Generator Set Specs

**Unit#:** 88211

**Manufacturer:** Cummins

**Capacity:** 2000 kW

**Rating:**

**Voltage:** 3015 Amps @ 480 V  
(60 Hz, Three-Phase)

**# of Leads:** 6

**Model#:** P1734F

**Serial#:** X07K423724

### Engine Specs

**Mfr:** Stamford

**Year:** 2007

**Hours:** 381

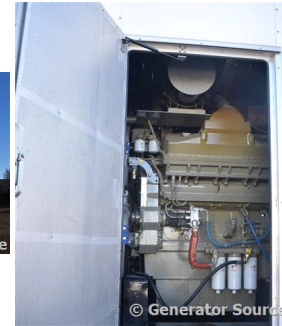
**Fuel:** Diesel

**Model#:** QSK60G6

**Serial#:** 33170774



**Description:** Cummins 2000 kW Diesel Generator Model #: P1734F, Serial #: X07K423724 Year 2007, 381 Hours, 480 Volt, 3 Phase, Sound Attenuated Enclosure with Base Fuel Tank



**Additional Features:** Sound Attenuated Enclosure, Auto Start/Stop, Safety Shut Down, 24 Volt Alternator, Dry Pack Air Cleaner, 3200 Amp Circuit Breaker, Muffler, Tank Type Block Heater, Digital Generator Panel, Digital Engine Panel, Engine Mount Radiator, 3800 Gallon Fuel Tank.



Generator Dimensions: 395"L x 116"W x 165"H

Overall Weight: 55,000 lbs.

**Price:** Call us at 800-853-2073 for a quote

**Generator Source thoroughly tests all of our products!**

The pricing displayed on our website is subject to change based on deinstallation costs, installation requirements, rigging/disposal, and any other situational variables, but we do try to keep it as up to date as possible.

Copyright © Generator Source. All Rights Reserved. Caterpillar, Detroit, Cummins, Perkins, SDMO, and all other brand names are trademarks of their individual prospective companies.

sales@generatorsource.com - generatorsource.com  
303-659-2073 - 1-800-853-2073

FORMERLY  
**Diesel**  
SERVICE & SUPPLY